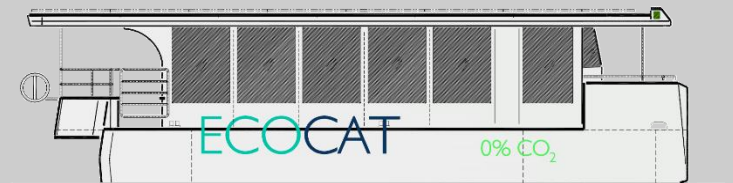


MAIN PARTICULARS

- Length overall:	13.50m
- Length between perpendiculars:	11.90m
- Beam:	5.50m
- Height:	4.20m
- Design draught:	0.75m
- Scantling draught:	0.85m
- Displacement:	17000kg
- Installed power:	2x 30kW
- Max. speed:	7.0kn
- Cruise speed:	6.0kn
- Design Category:	Zona 6 Cat. D
- Passengers:	55pax
- Fresh water:	1x 125l
- Black/Grey water:	1x 500l

C2 | NAVAL ARCHITECTURE MARINE ENGINEERING

c/ Averroes 4, 28224 Pozuelo de Alarcón | Spain
T: (+34) 912-877-790 | M: (+34) 655-638-630
W: www.c2-na.com | E: info@c2-na.com



C2 | 050 – ECOCAT 2.0

The ECOCAT 2.0 is a catamaran built in naval aluminum and included within the BAHIA ZERO Project of the Bay of Santander.

This particular catamaran, has a length of 13.5m and a beam of 5.5m, with a total capacity for 55 passenger and 2 crew members.

The boat is 100% zero emissions thanks to its purely electric propulsion by two 30kW motors each, powered by two 100kW LiFePO4 batteries respectively. In addition, the top of the superstructure has a 40 high-efficiency SUNPOWER solar panels in order to increase the range and consumption under sailing condition.

The propulsion system is conventional and symmetrical on each hull. Each engine is directly coupled to the propulsion shaft equipped with a 17" propeller.

The boat has great maneuverability thanks to its propulsion system and its two proportional transverse propellers SE80PRO.

The passengers of the boat are distributed throughout the entire cabin, which occupies a large percentage of the boat length and practically the entire beam.

The distribution of the passengers allows free movement through two corridors that run along each of the sides of the boat in bow-stern direction.

These corridors besides to distribute the passage symmetrically, communicate the exterior fore and aft areas.

The boat is equipped by a complete WC, located in the aft area of the cabin with direct access from outside aft area.

The aft area, larger than the bow area, allows a pleasant stay aft of the boat with clear views to both sides and the stern of the boat.

The boat access is located in aft area through sliding doors on each side, integrated into the handrail.

The bow area allows the passage of passengers from one side to another. The anchoring system is located in this area.

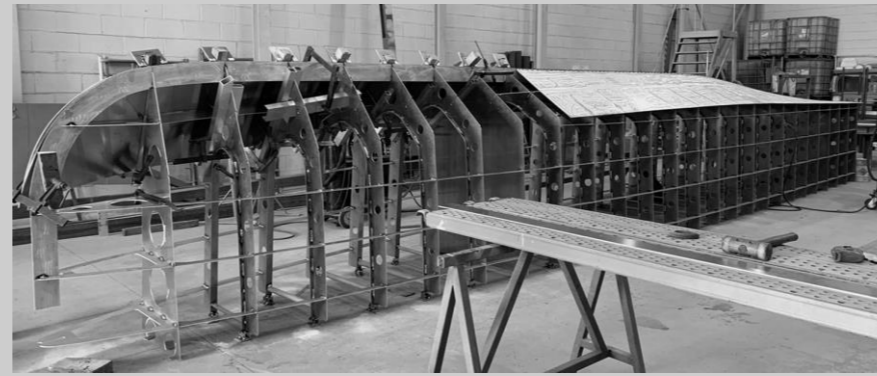
The wheelhouse is located in centerline at the forward area of the cabin. This position allows a 360° vision thanks to the large windows of the cabin and its elevation position over the main deck of the boat.

The exterior styling of this first unit was designed by the cantabrian artist Okuda San Miguel, thus becoming his first work of art in motion.

In mid-October, the ECOCAT 2.0 was launched at METALTEC NAVAL SHIPYARD facilities, in the Bay of Santander.

This first unit will be part of the BAHIA ZERO Project in Santander, which aims to modernize the entire infrastructure of the Port and its terminals, as well as the fleet that operates within its waters, offering a 100% ecological and 100% environmentally sustainable navigation.

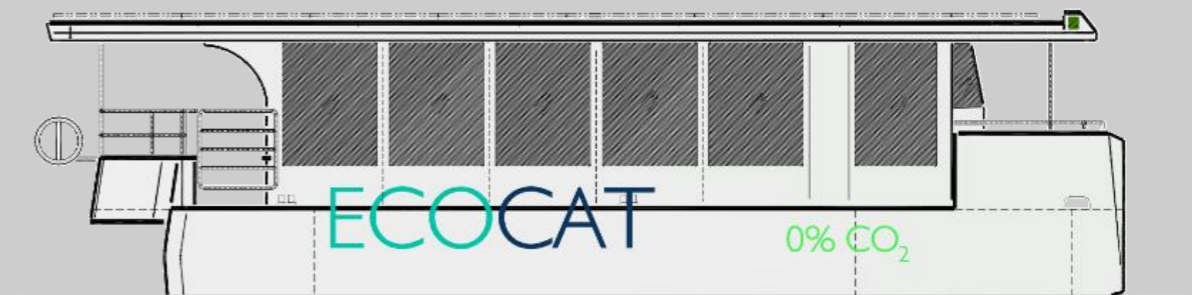
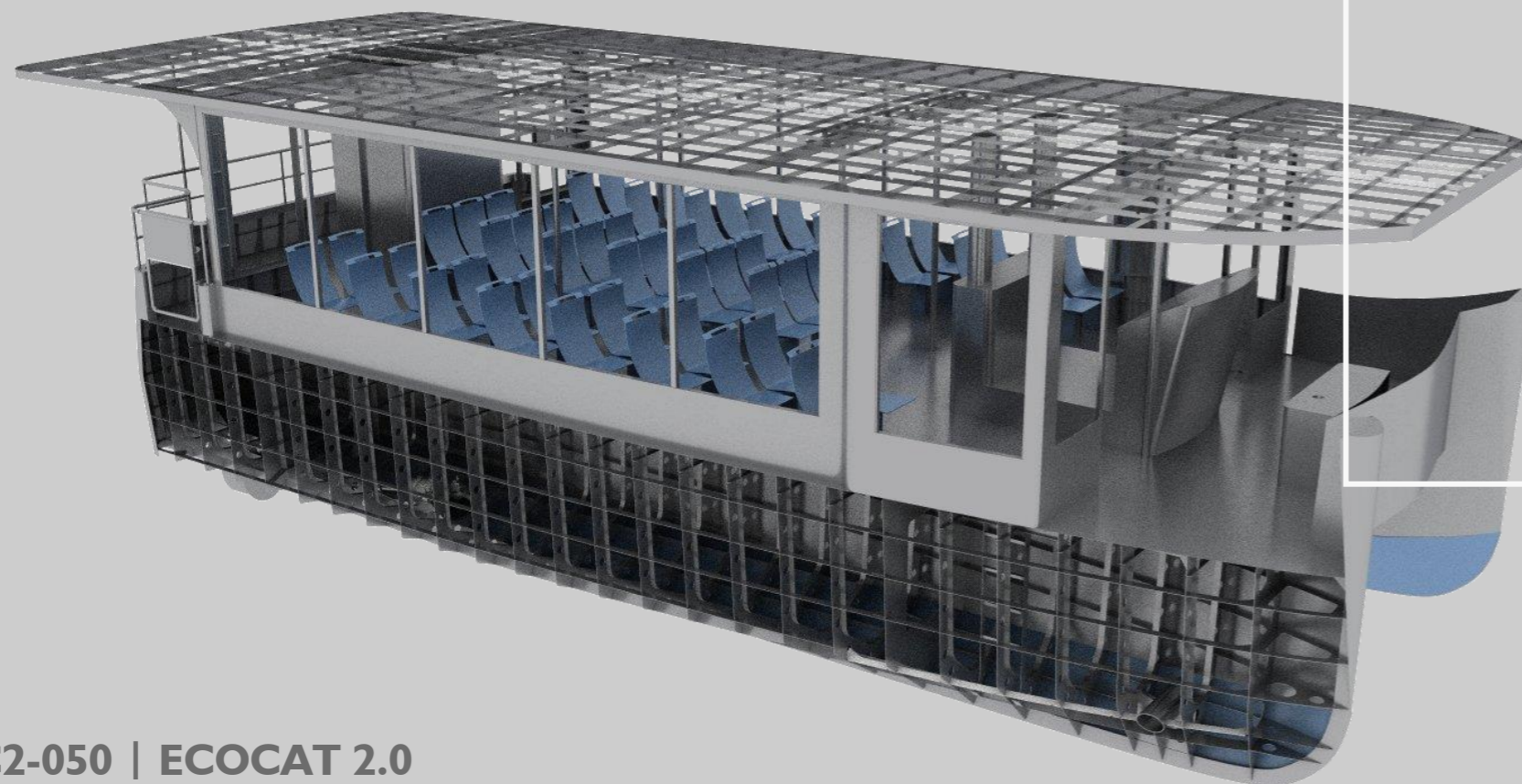
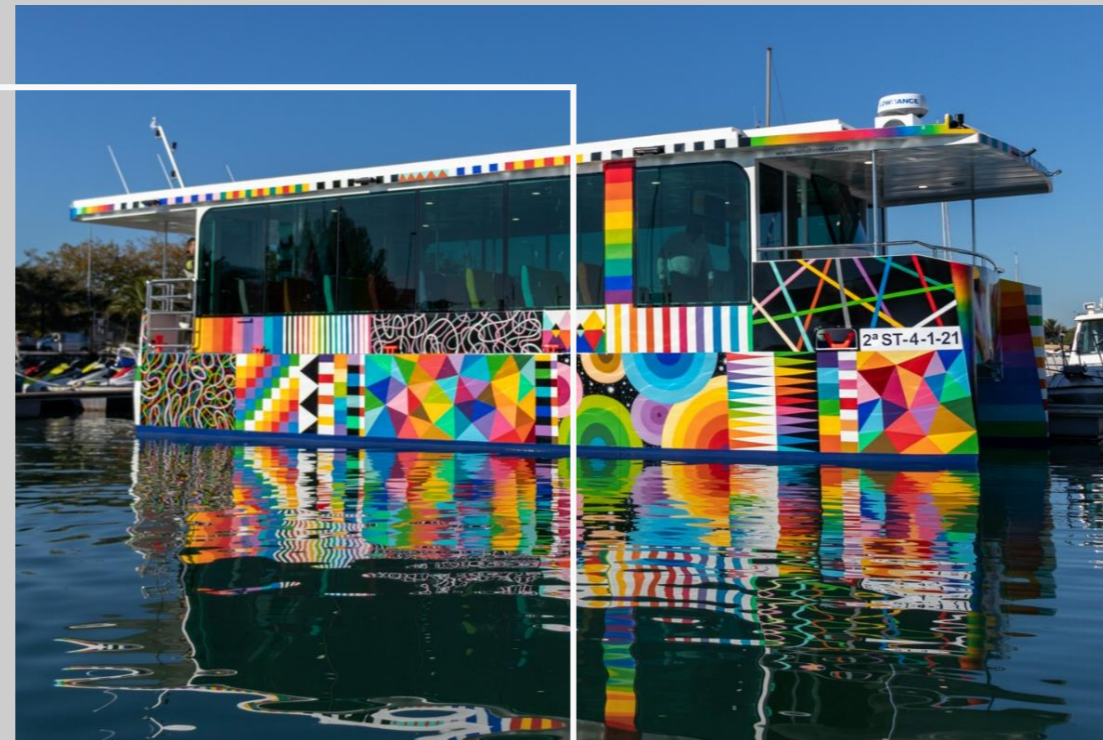
Currently, C2 is developing a second larger unit, which its construction has already started.



C2 | NAVAL ARCHITECTURE MARINE ENGINEERING

The ECOCAT 2.0 is an aluminum catamaran with capacity for 55 passengers and 2 crew members.

It is expressly designed for tours within the Bay of Santander. During its design, noise reduction in the cabin has been focused in order to maximize the passenger comfort onboard.



CARACTERÍSTICAS PRINCIPALES

Length overall:	13.90m
Length between perpendiculars:	11.90m
Beam:	5.50m
Height:	4.20m
Design draught:	0.75m
Scantling draught:	0.85m
Displacement:	17000kg
Design Category (CE):	Zona 6 Cat. D
Power:	2x 30kW
Max. speed:	7.0kn
Cruise speed:	6.0kn
Passengers:	55pax

C2-050 | ECOCAT 2.0