

MAIN PARTICULARS

- Length overall: 10.70m
- Length between perpendiculars: 9.72m
- Beam: 3.50m
- Design draught: 0.60m
- Scantling draught: 0.65m
- Deadrise aft: 20°
- Displacement: 8203kg
- Max. power: 2x 300hp
- Max. speed: 35kn
- Cruise speed: 26kn @ 80% MCR
- Crew: 8pax
- Fuel: 2x 600L
- Design category: Zone 3 | Cat. C
- Class notation: LRS

+ 100 AI SSC PATROL MONO HSC G2 - MCH



NAVAL ARCHITECTURE
MARINE ENGINEERING

c/ Averroes 4, 28224 Pozuelo de Alarcón | Spain
T: (+34) 912-877-790 | M: (+34) 655-638-630
W: www.c2-na.com | E: info@c2-na.com



C2 | 011 – ERTZAINZA SAR BOAT

This particular 11m Search&Rescue boat is specifically designed for ERTZAINZA (Spanish Police) to perform the most exigent work in heavy seas, within highest safety conditions for the crew.

All the design and the construction of this boat are made by aluminum AL 5083 H111 and AL 6005 T6.

The main deck has been designed with an available free area over 9m², located aft, with easy sea access for rescue and diving purposes. Furthermore, this deck has a 3° inclination for a correct drainage of the embarked water in rough seas.

The boat is equipped by two outboard engines of 300hp each. Nevertheless, the structure scantlings permit a higher outboard power installation up to 3x 300hp and to achieve a maximum speed of 45kn. The basic propulsion, allows a maximum speed of 34kn and a cruise speed of 26kn.

Thanks to the low consumption of the installed MERCURY outboards and the high fuel capacity of the twin tanks installed, 600 liters each, the range of this boat is over the average range of this type of boats.

The crew formed by 9 pax is fully protected within the Nordic vision 360° cabin and accommodated through dumping seats for an easy and comfortable seating in rough seas.

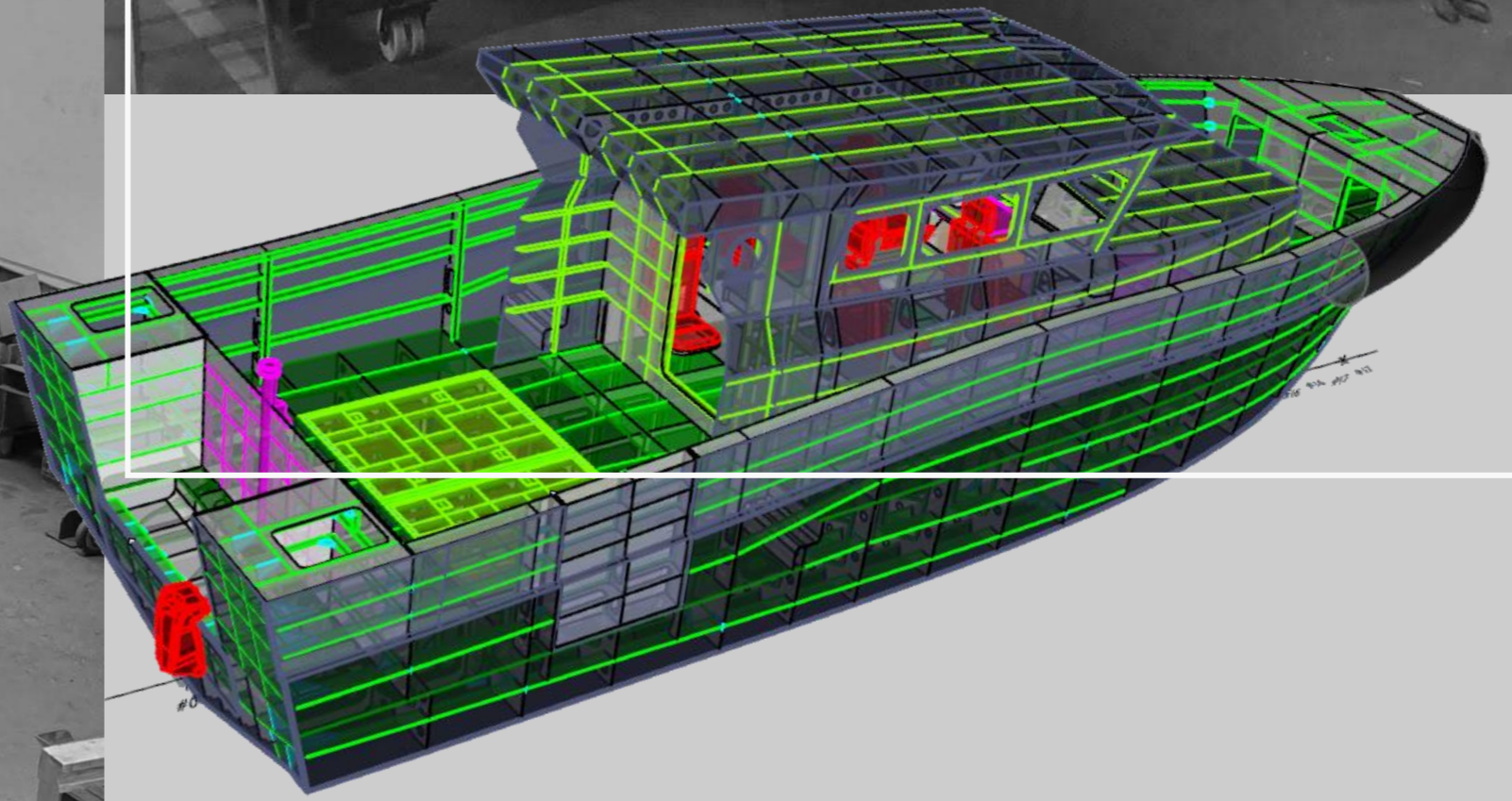
Thanks to the well design and interior space requirements, the boat has an interior double deck cabin, where the forward cabin deck permits the arrangement of extra seats and a dinette, besides to increment the stowage capacity significantly.

The cabin is designed as per NBQ criteria, providing a safety atmosphere in case of toxic scenario.

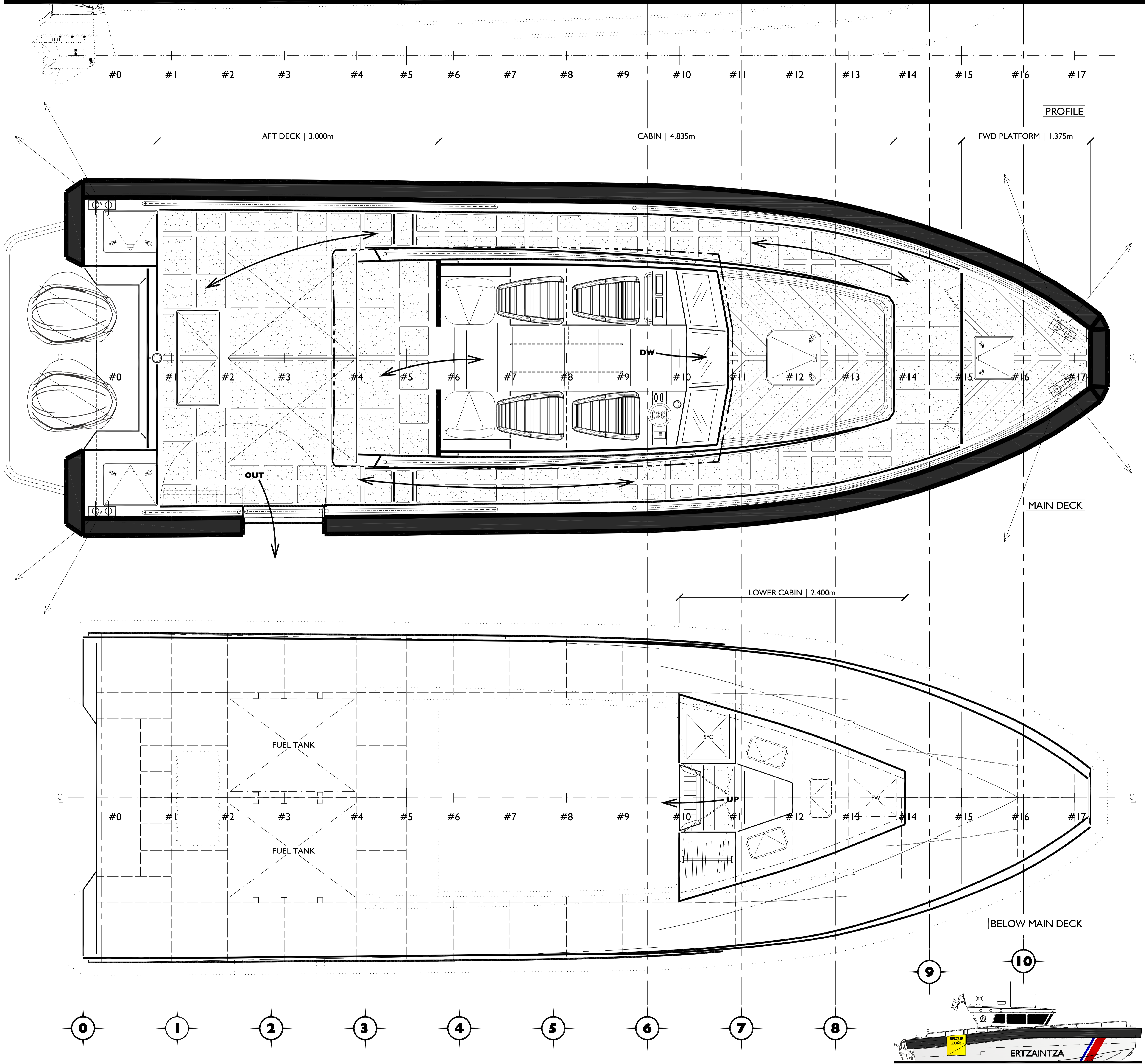
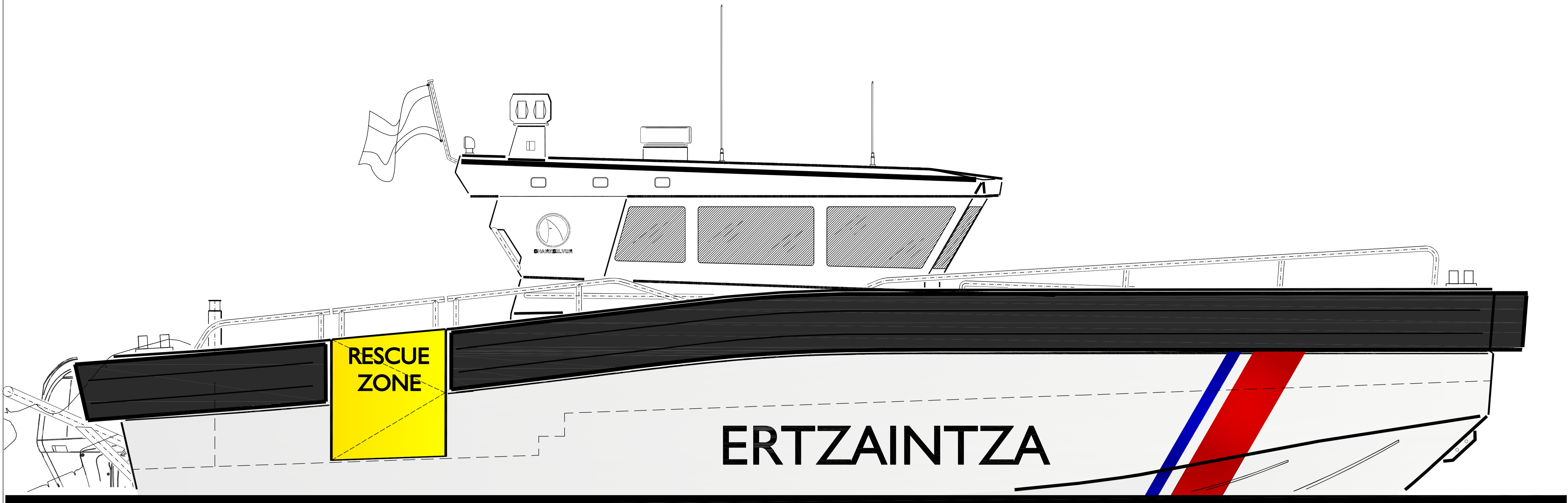
Furthermore, the cabin configuration permits the arrangement of a stretcher between the cabin seats with an easy access from the sea.

As per Search&Rescue requirements, the boat is ready to perform towing works through its towing system located at aft main deck bulkhead.

This particular design has been designed and registered by LLOYD's REGISTER OF SHIPPING.



NAVAL ARCHITECTURE
MARINE ENGINEERING



LEGAL NOTE

1 | This drawing/document is property of C2 | NAVAL ARCHITECTURE & MARINE ENGINEERING (hereinafter C2), its copy, construction use and/or dissemination to third parties is not permitted without a written authorization.

2 | Shipyard shall verify the content of this drawing/document and will notify to C2 in case of any doubt or discrepancies before its construction.

3 | Any modification without C2 written permission are under Shipyard's responsibility.

4 | Payments for the use of this drawing/document and all related information belonging to this Project are considered as "License of Use" for one unit.

5 | No additional unit construction shall be start without the corresponding payments and written permission by C2.

MAIN PARTICULARS

Length overall	10.70 m
Length between perpendiculars	9.72 m
Beam	3.50 m
Height	2.00 m
Design draught	0.60 m
Scantling draught	0.70 m
Displacement (Td)	8203 kg
Design category (CE)	Zone 3 Cat. C
Block coefficient	0.392
Max. power	2x 350 hp
Max. speed	>30 kn
Cruise speed	>22 kn @ 80% MCR

Class Notation | LLOYD'S REGISTER OF SHIPPING

100 A1 SSC PATROL MONO HSC G2 - MCH

02	20190512	ARA	20190512	MCC	Drawing updated
01	20190318	MCC	20190318	MCC	Drawing updated
Rev.	Date	Made by	Date	Approved by	Description
Project 011 ERTZAINITZA SAR BOAT					
Reference 020 GENERAL ARRANGEMENT					
Scale	1:15	Format	A0	Page	N. of Pages
Made by	MCC	Date	20180807	Revised by	MCC
Date					

C2 | NAVAL ARCHITECTURE
MARINE ENGINEERING

www.C2-na.com | info@C2-na.com | +34912-877-790

This drawing is the property of C2 | NAVAL ARCHITECTURE & MARINE ENGINEERING (hereinafter C2). It should not be reproduced or reproduced for any construction or shared with third Parties without a written authorisation. Builder should check the content of this drawing and advise the C2 in case of any discrepancy prior of any construction. All modifications done by Builders without specific written authorisation are carried out under their exclusive responsibility.

Este plano es propiedad de C2 | NAVAL ARCHITECTURE & MARINE ENGINEERING (en adelante, C2). Si contenido no debe ser reproducido, adaptado a una nueva construcción ni compartido con terceros sin autorización escrita. El Constructor deberá comprobar el contenido del presente documento y avisar a C2 en caso de discrepancia. Toda modificación realizada por el Constructor sin autorización expresa, será considerado bajo su responsabilidad.